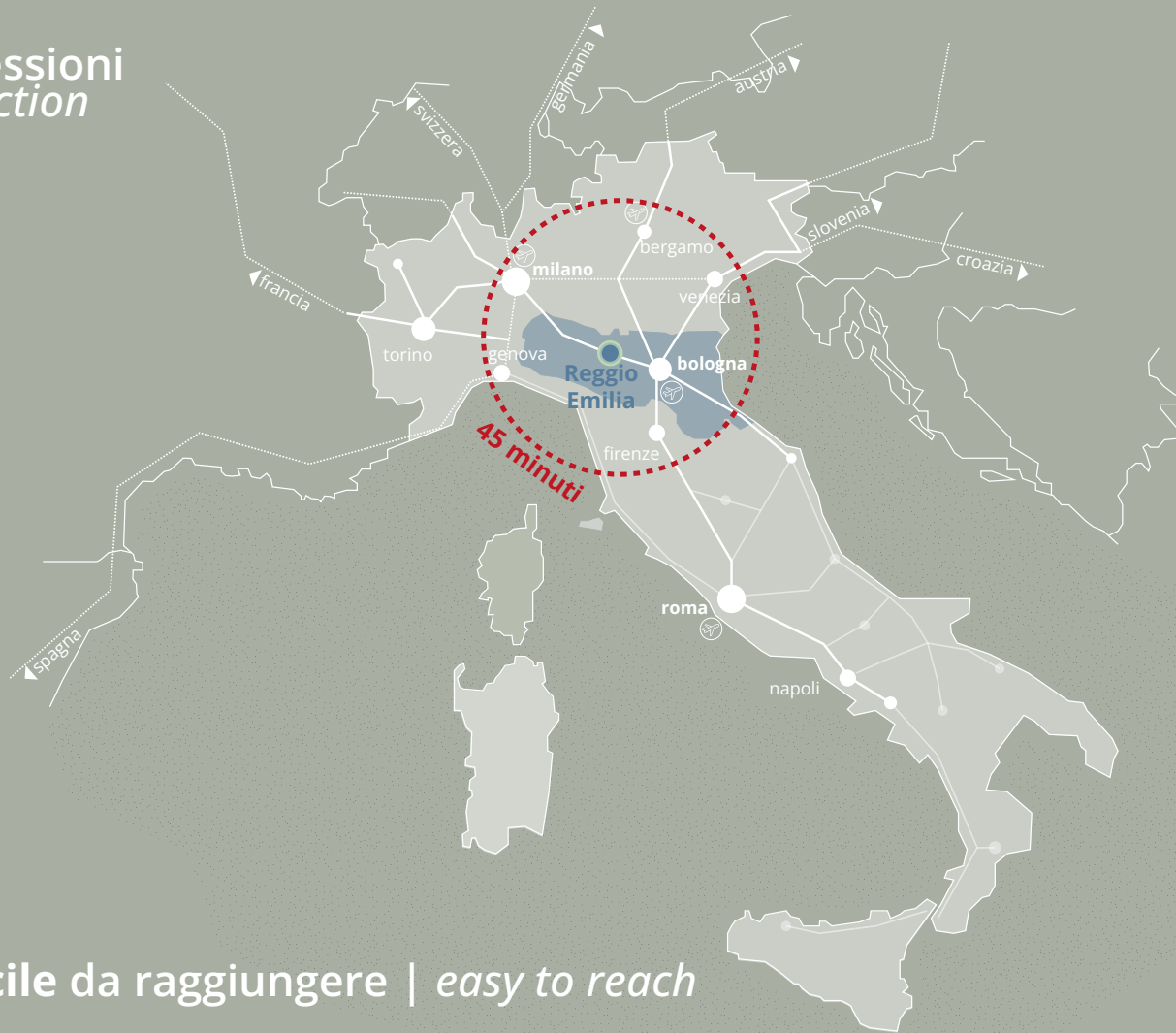


palazzina**emme**
s t u d e n t h o u s i n g

connessioni
connection

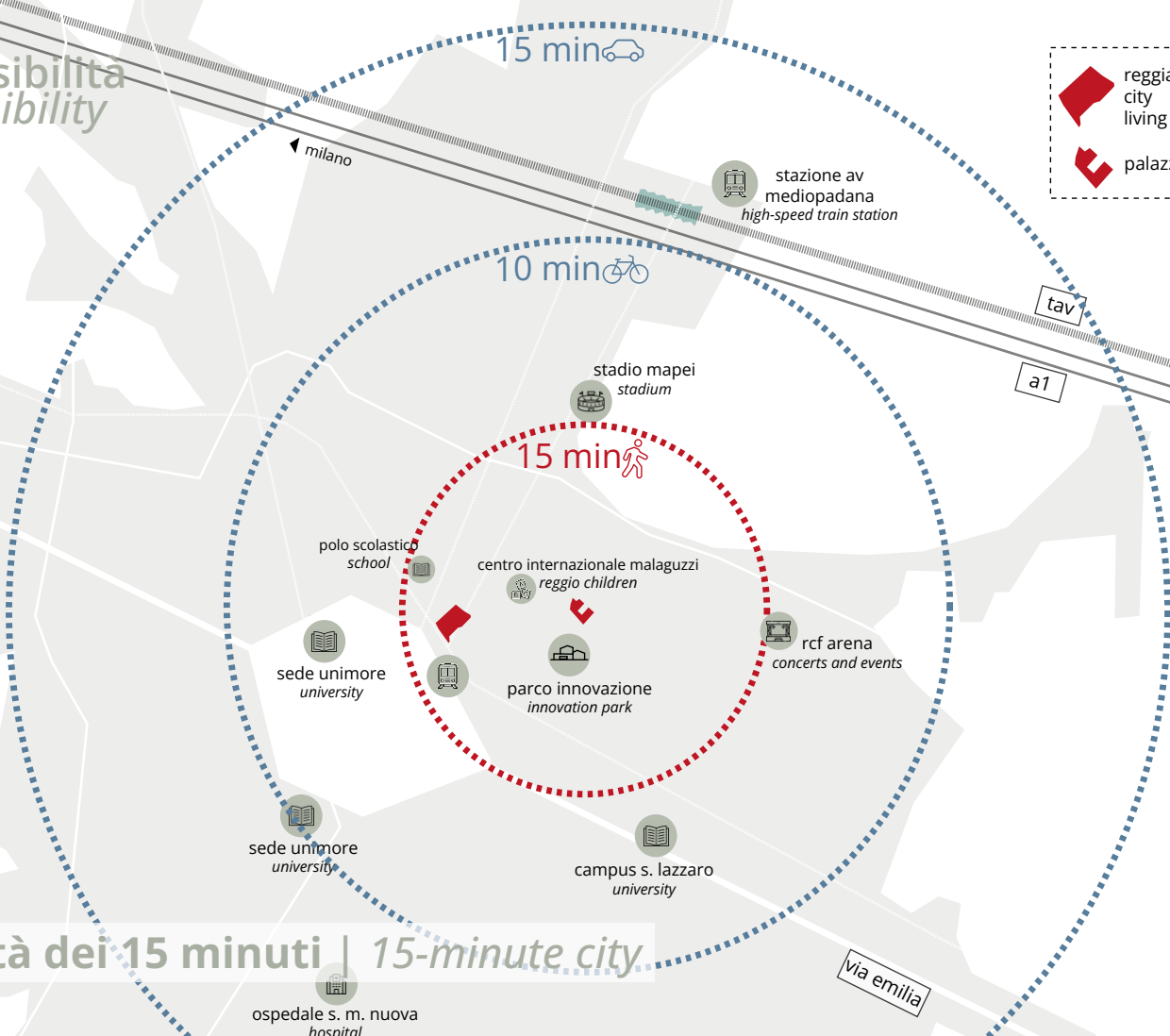


>> facile da raggiungere | *easy to reach*

accessibilità
accessibility

reggiane
city
living

palazzinaemme



» città dei 15 minuti | 15-minute city



» storia e identità | *history and identity*

Luigi Magistretti - 1932

centro internazionale
malaguzzi
reggio children

tecnopolo
technopolo

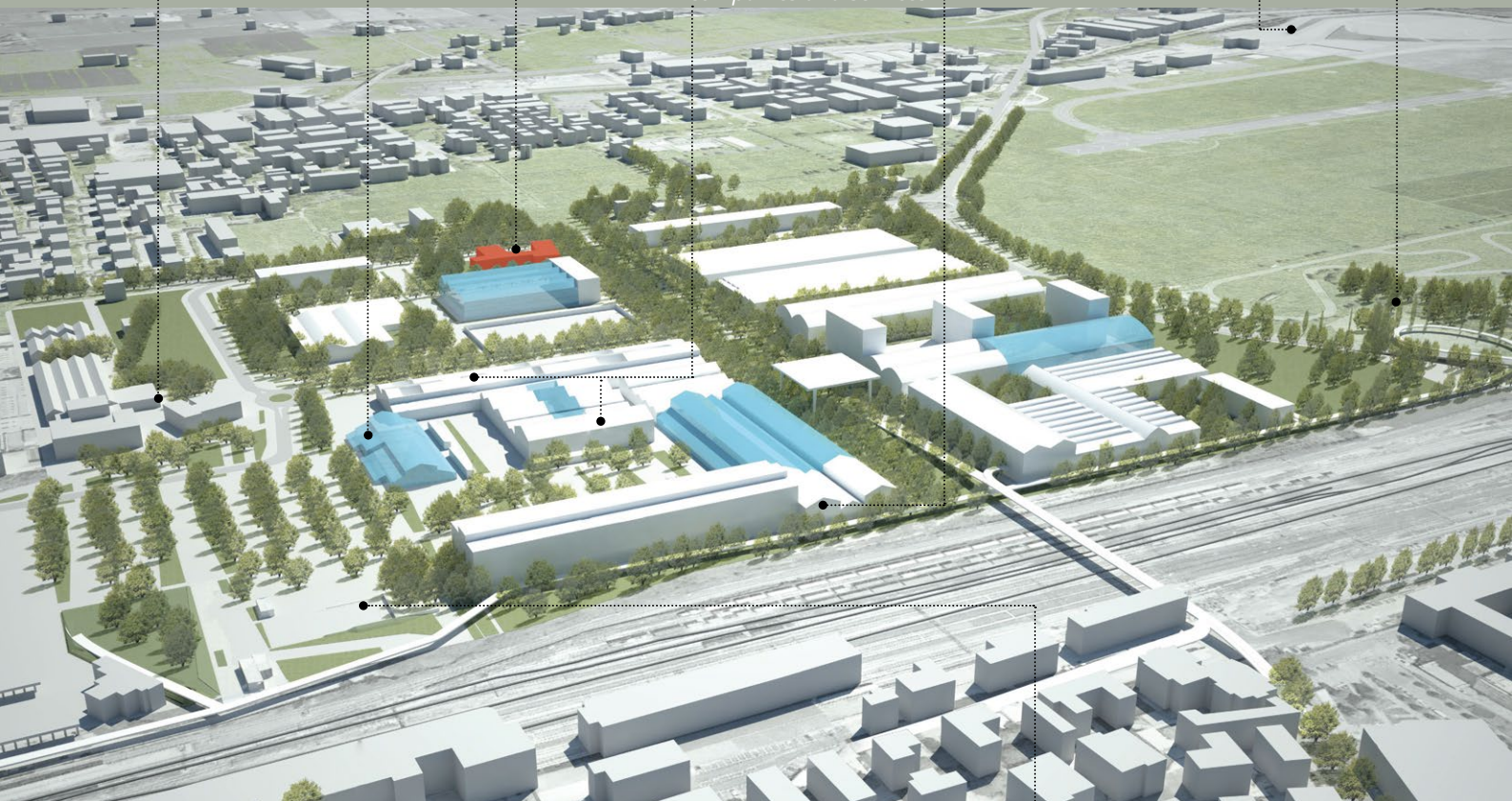
palazzina m
student housing

capannoni c17-c18
companies and services

capannone c15
university

rcf arena
concerts and events

parco campovolo
campovolo park



>> parco innovazione | *innovation park*

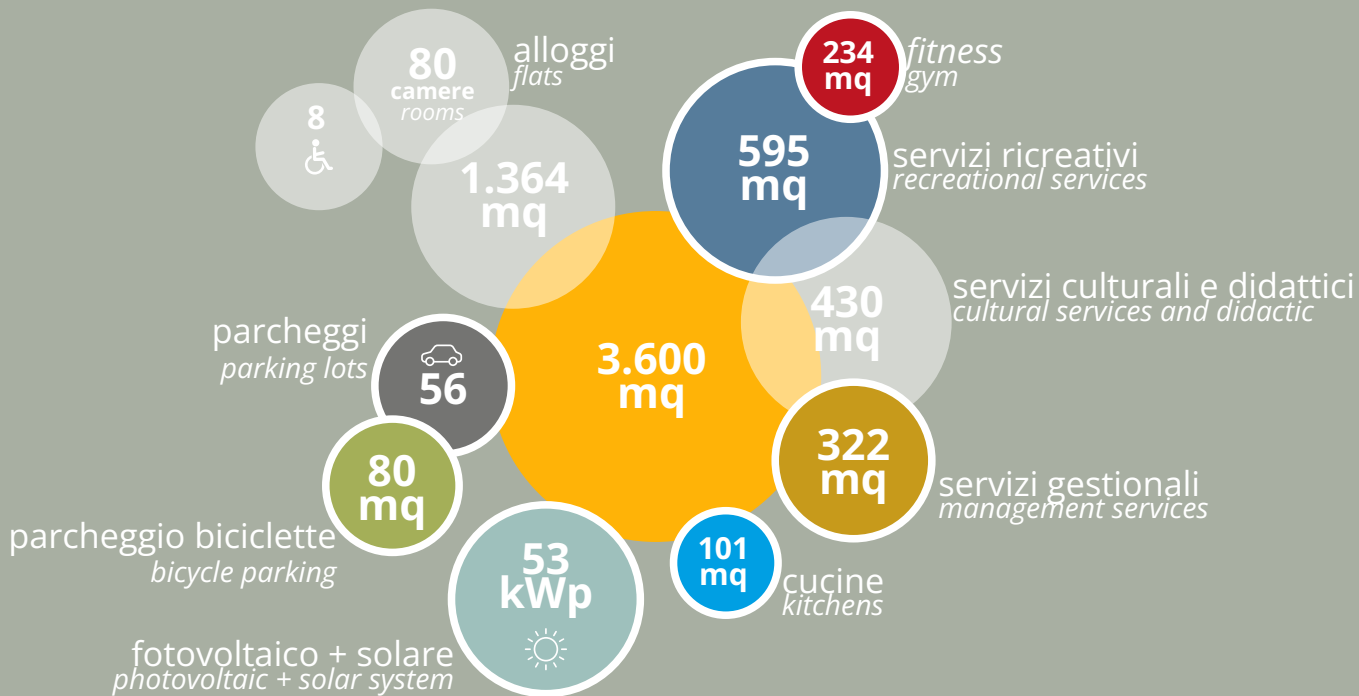
servizi sportivi
sports services

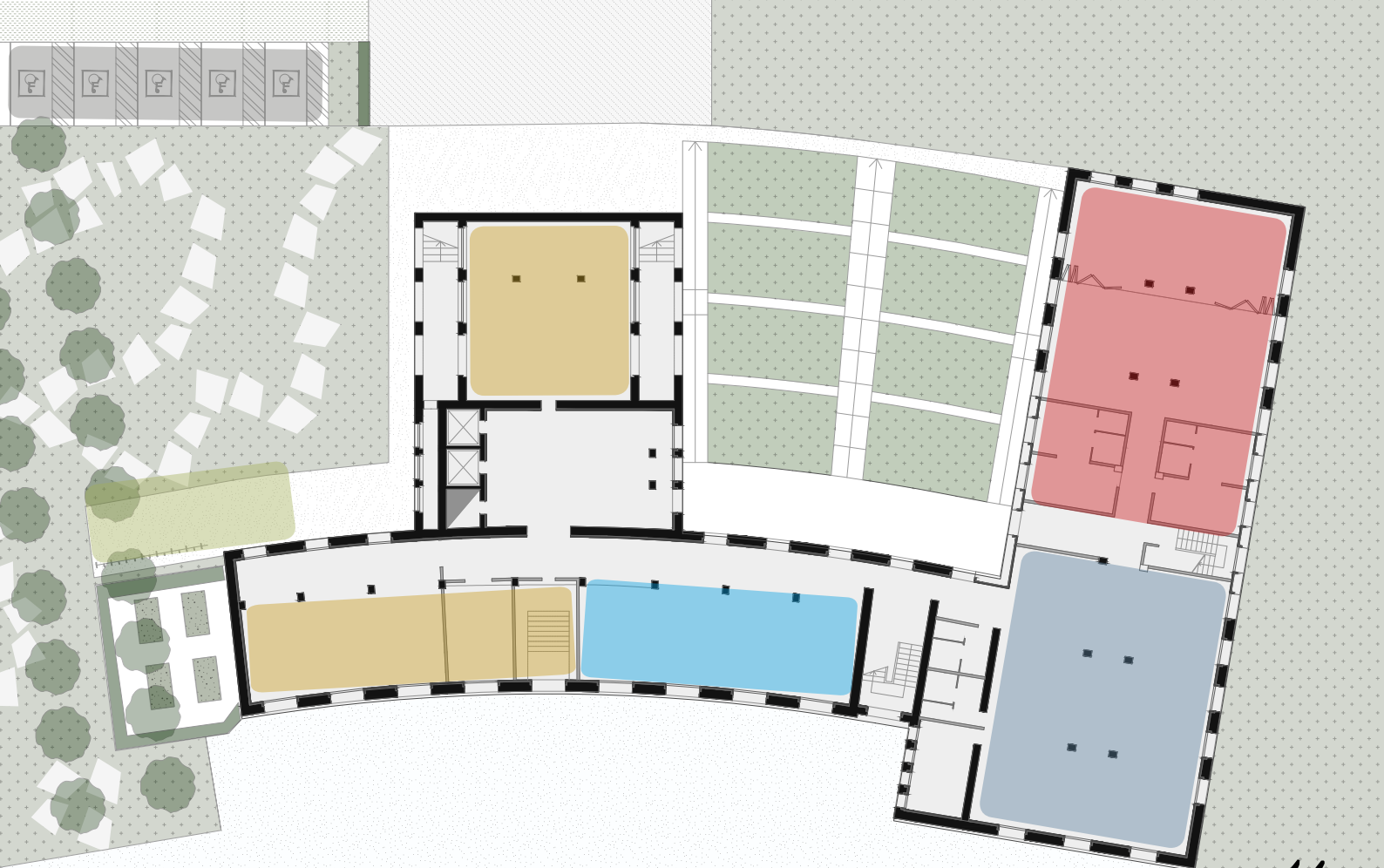
progettato per funzionare
designed to work

progettato per essere aggiornato
designed to be updated

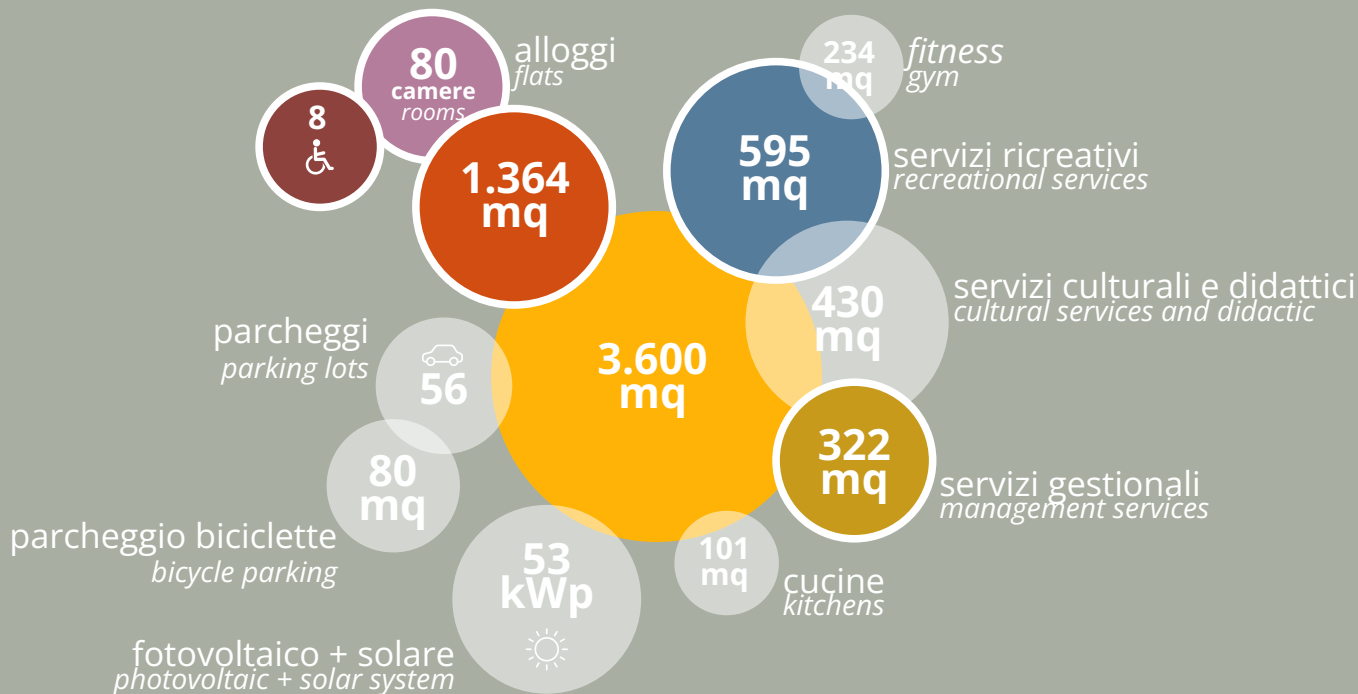
progettato per appassionare
designed to passionate

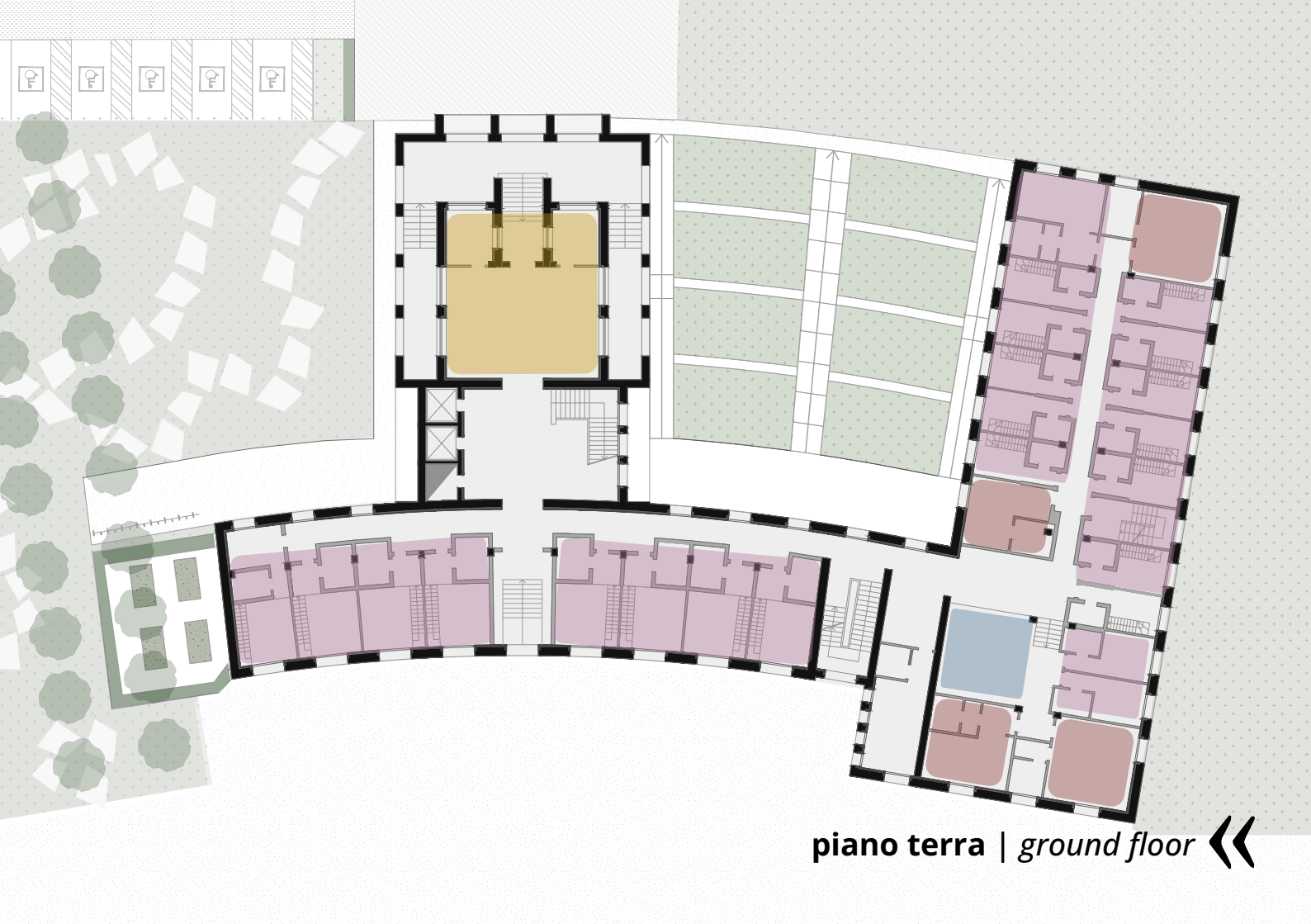






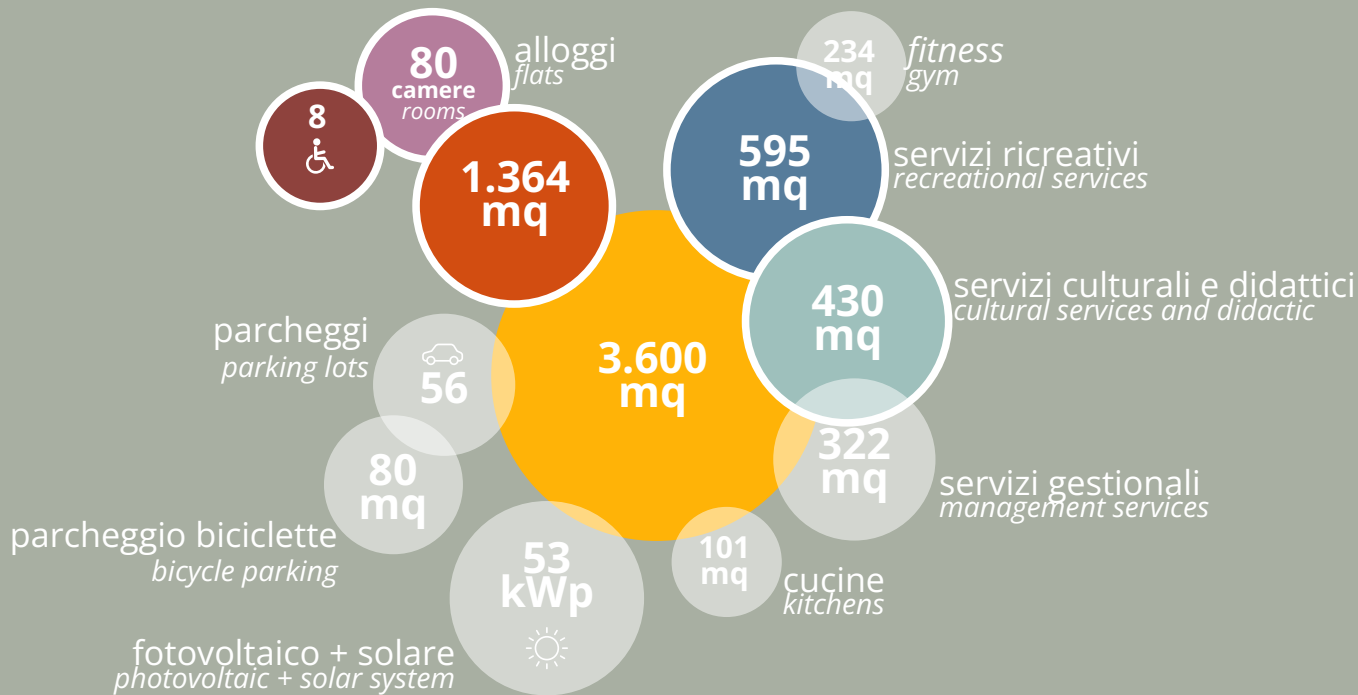
piano seminterrato | *basement floor* <<

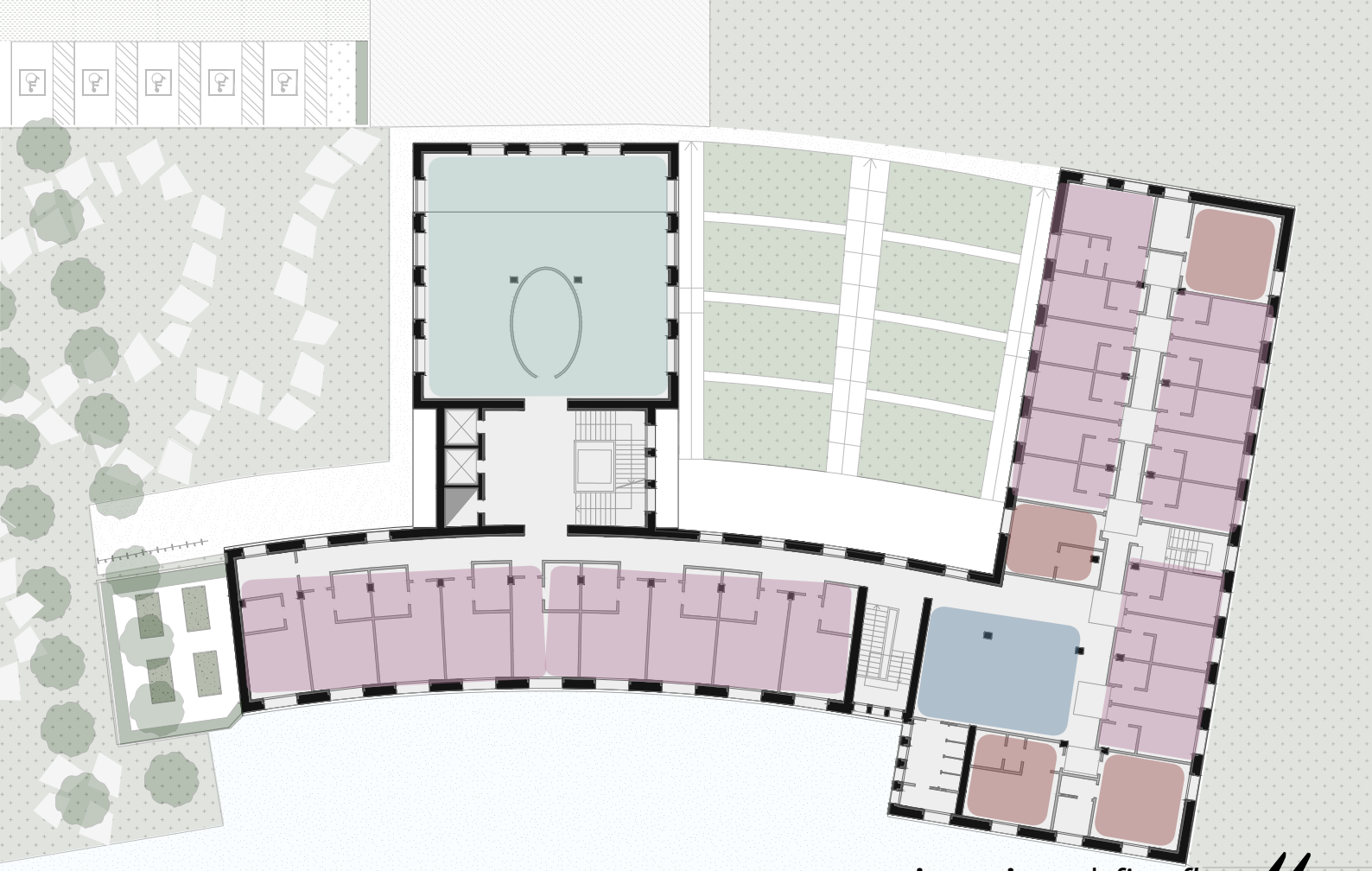




piano terra | ground floor







primo piano | first floor <<

» **memoria e innovazione**, nuova identità degli spazi esistenti
memory and innovation, new identity of existing spaces





l'edificio come banca di **energia e materiali**
the building as a bank of energy and materials





progettato a strati per **contenere i costi** ed essere assemblato con
rapidità e precisione
designed in layers to contain costs and be assembled quickly and precisely



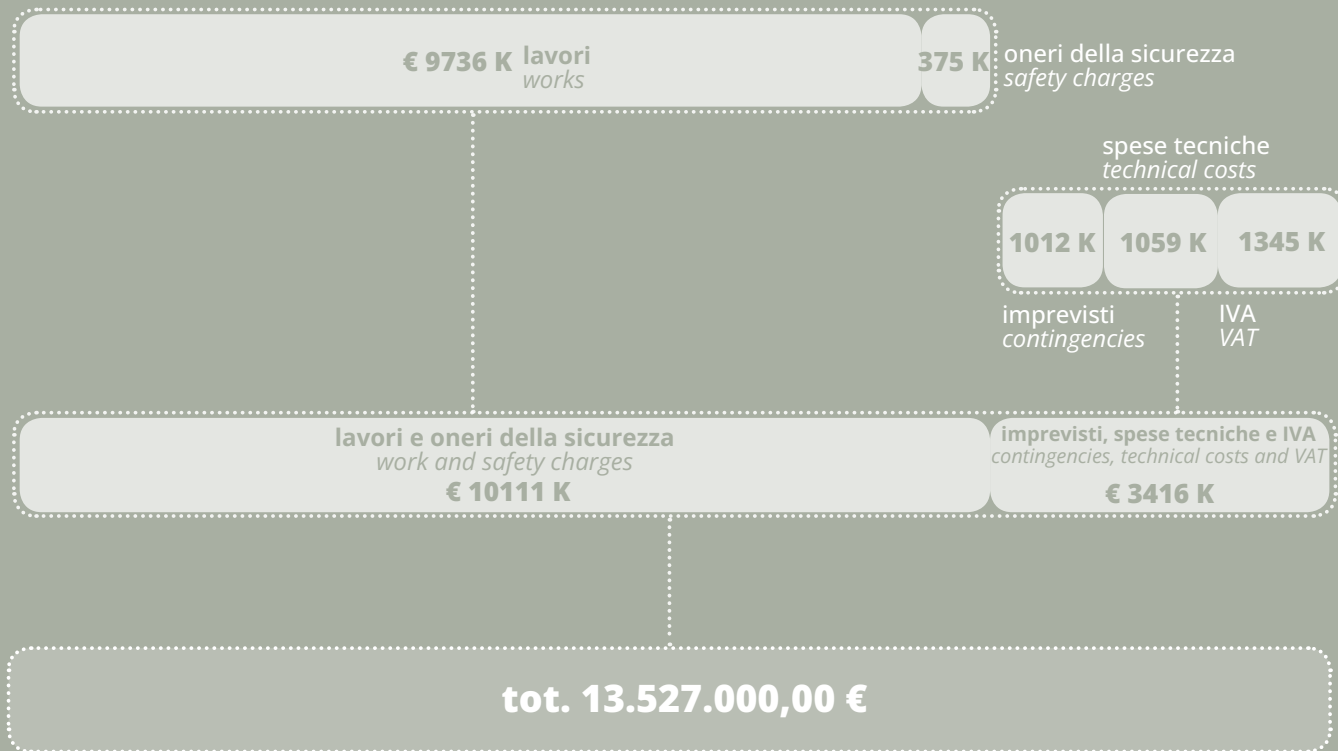
» promuovere il **benessere** per appassionare ad un nuovo modo di abitare
promote well-being to inspire a new way of living

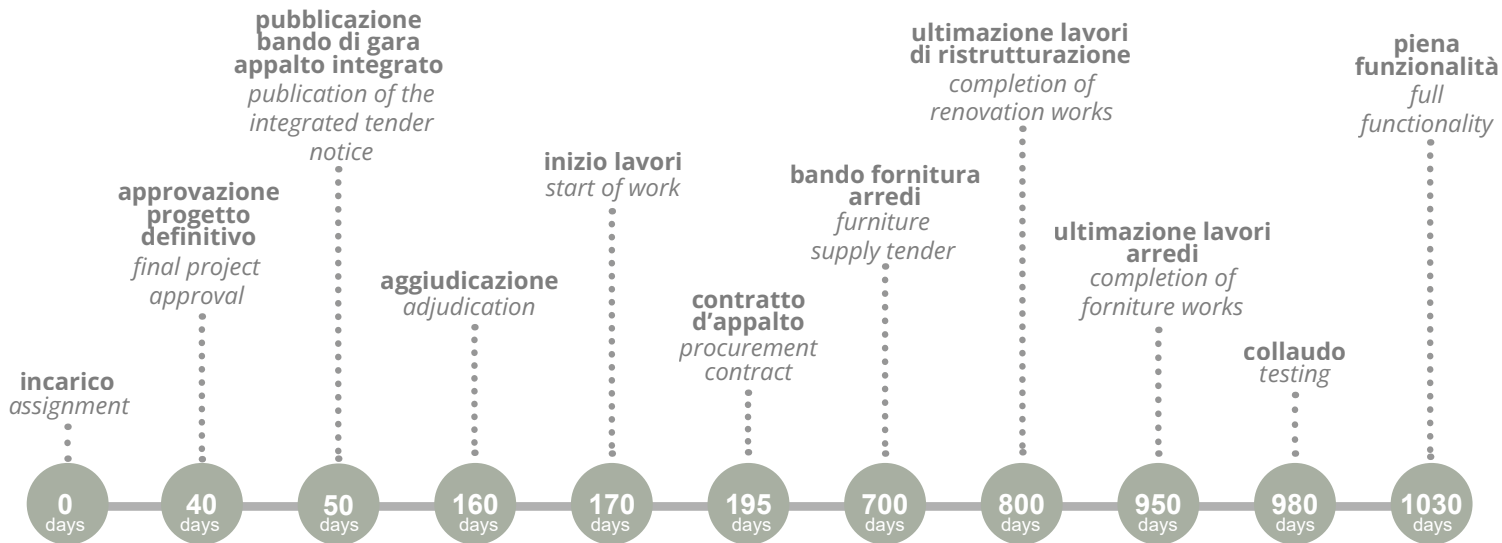




pensare l'**abitare temporaneo** come la propria casa
think of temporary living as your own home







contattaci
contact us



GENERATORI DI FUTURO

alex pratissoli
vice sindaco comune di reggio emilia
alex.pratissoli@comune.re.it

luca torri
ad STU reggiane spa
ltorri@parcoinnovazione.it

progetto e grafica
project and graphics



laboratorio di architettura
architetti associati
www.labarch.it
laboratorio@labarch.it